

Encore's T.38 End-Point

Platform

C

Technology

The T.38 End-point is a combination of fax termination and the fax relay modules. The relay layer, which is the real time fax relay over the IP network, is in accordance with the ITU-T T.38 protocol recommendations. The fax termination layer is in accordance with the ITU-T T.30 recommendations. The T.38 Fax Server does not require a data pump layer, which would otherwise be required in a Fax Relay configuration. The T.38 Fax Server needs a H.323/SIP layer for communicating with gateways. Figure 1 below illustrates the T.38 Fax Server configuration communicating with a VoIP/FoIP gateway over IP Network.

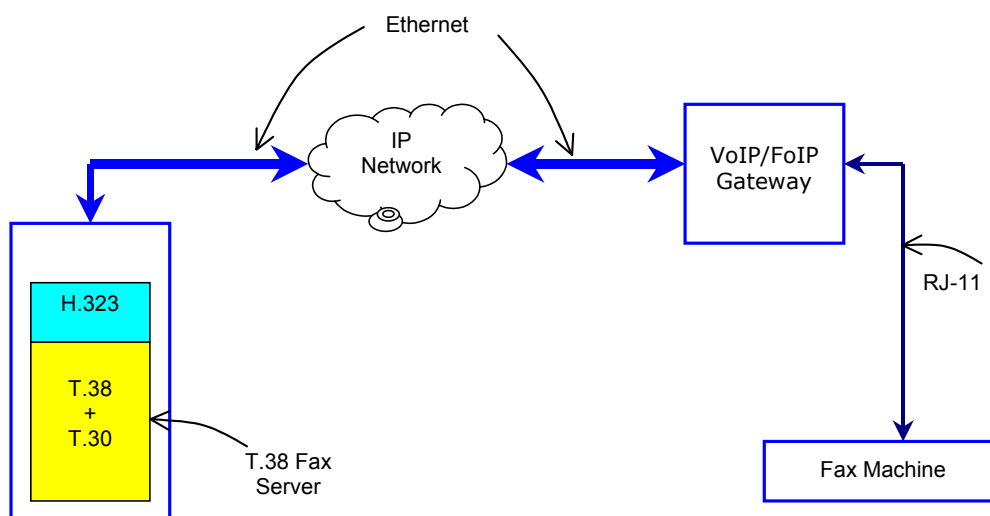


Figure: Configuration of the T.38 Fax Server

Features

- Adheres to all the mandatory features of ITU-T T.38 and ITU-T T.30
- Support up to and including 14,400 bps fax (V.17, V.29 and V.27ter)
- Multi-channel Capability.
- Implementation of all the modules are in 'C'
- T.38 Inter-operability tested against CISCO gateway and OKI-TA using UDP mode of packet transfer
- Inter operability tested using commercial fax machines and the Genoa Technology's FAXLABTM T.30 test suite to ensure seamless T.30 relay.
- Tested for various IP network impairments such as latency, jitter, packet losses, out of order packet and duplicate packets.
- Provided in the form of Hardware Independent Library for easy porting to the target platform.
- Customizable API for providing T.4 image interface for the T.38 Fax Server

Performance

- Per Channel Data memory required is 14.53 Kbytes
- About 84 channels of T.38 Fax Server could be executed on a 1.2 GHz Pentium system under Linux

* Specifications are subject to change

Availability

Now.

For further information please visit our web site, <http://www.ncoretech.com> or email to: jp@ncoretech.com or contact:

Encore Software Limited
6th Floor Leo Complex
44 & 45 Residency Cross Road
Bangalore 560 025, INDIA
Tel: +91-80-4112 4291 to 95
Fax: +91-80-2558 7690